

# EDCON-COMPONENTS



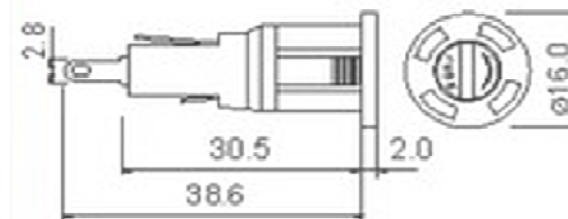
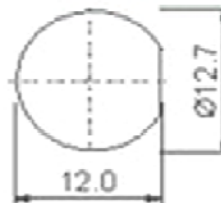
## Technical Discription

## Drawing

EDCON-COMPONENTS Fuse Holders features for easy removal, clearly printed / imprinted "FUSE" for easy panel identification and keyed mounting hole requirement for anti rotation safety. All fuse holders include mounting washer and solder lugs for wiring.

Rated Current	10A / 125VAC
Rated Current	6,3A / 250VAC
Insulation Resistance at 500VDC	100MΩ Min.
Contact Resistance	5mΩ @ 1A DC
Dielectric Strength for 60seconds	AC1500V Min.
Cap-Type:	Screw
Panel-Thickness: from / to	0,7~3,5mm
Terminal:	2,8mm
Mating for Fuse:	5.0x20mm
Material Frame and Cap:	Nylon UL (94V-2
Material Terminal:	Brass Nickel plated
Panel Mounting Method:	Snap-In-Type

### Panel Dimension



### Approvals



### PCB Fuse Holder

Part No.: **R54008**

Customer:

DRW:	Jason	CHKD	Wilson	MATL:	Wilson	TOLERANCE	Mason	DATE	01.02.2019
APPD:	Schumi			FINISH	Jamy		Sheet No.		1 from 2

[www.edcon-components.com](http://www.edcon-components.com)

email: [info@edcon-components.com](mailto:info@edcon-components.com)

# EDCON-COMPONENTS



## Ordering Informations

Serie	Special function	Special function	ROHS	Packing						
<b>R54008</b>	<b>N</b>	<b>N</b>	<b>R</b>	<b>BU</b>						

<b>N</b> = No function	<b>N</b> = No function	<b>R</b> = ROHS Conform	<b>BU</b> = Bulk-Ware
			<b>IV</b> = Individual Package

<b>PCB Fuse Holder</b>	
Part No.:	<b>R54008</b>
Customer:	

DRW:	Jason	CHKD	Wilson	MATL:	Wilson	TOLERANCE	Mason	DATE	01.02.2019
APPD:	Schumi			FINISH	Jamy		Sheet No.		2 from 2